



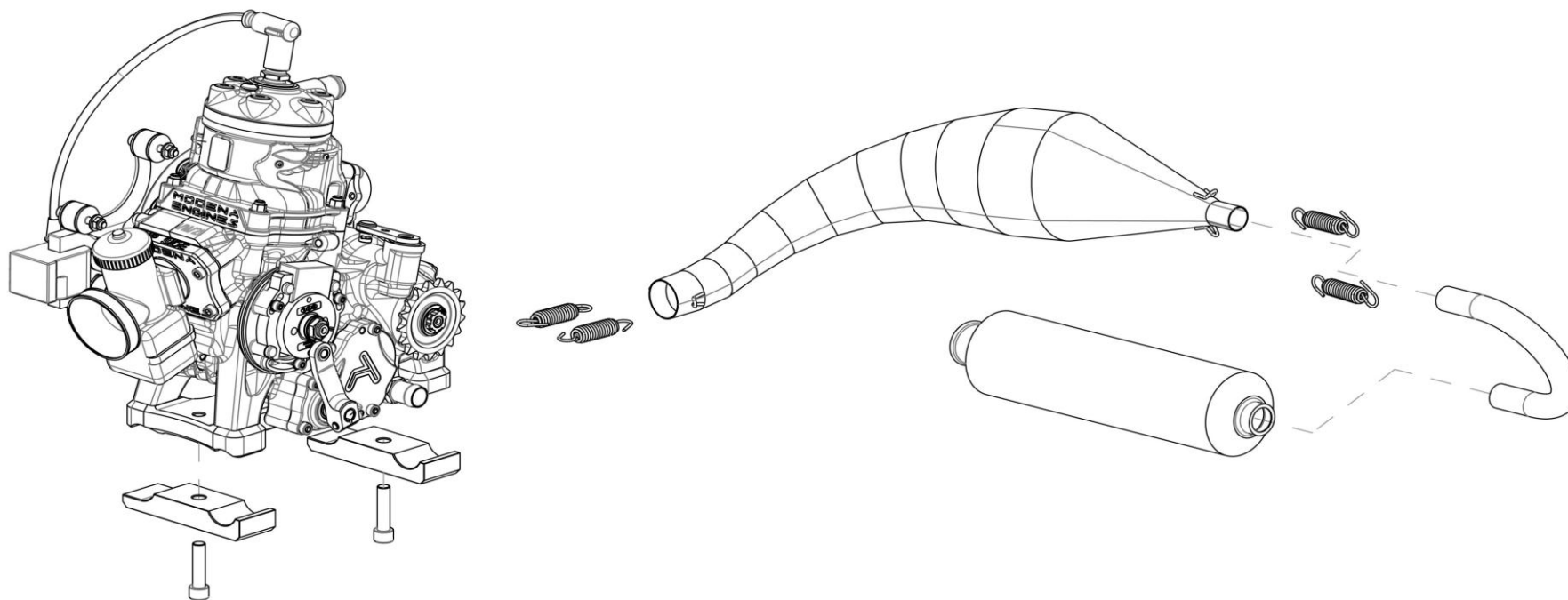
MODENA
KK1
ENGINES

Catalogo Ricambi
Spare Parts Catalogue



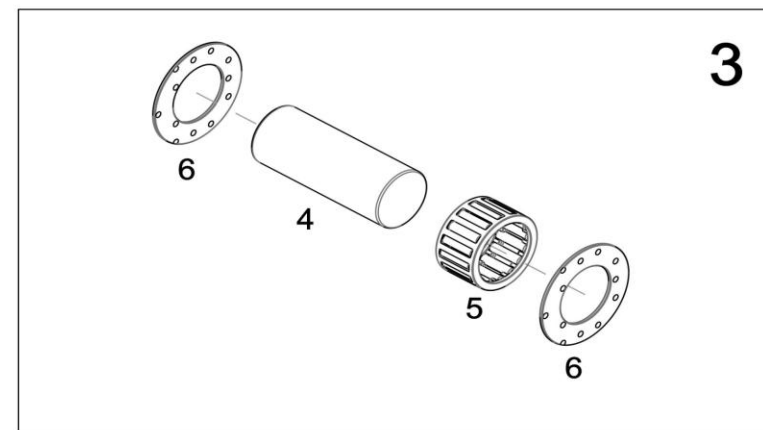
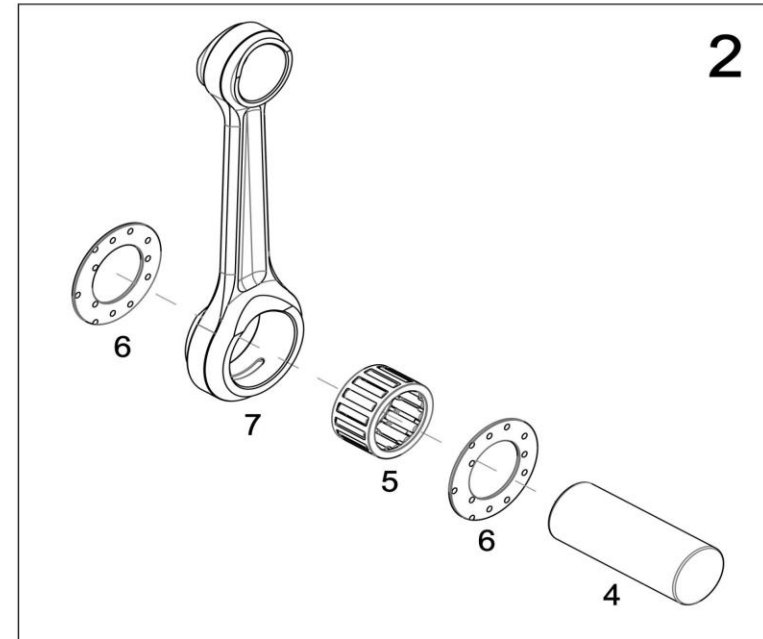
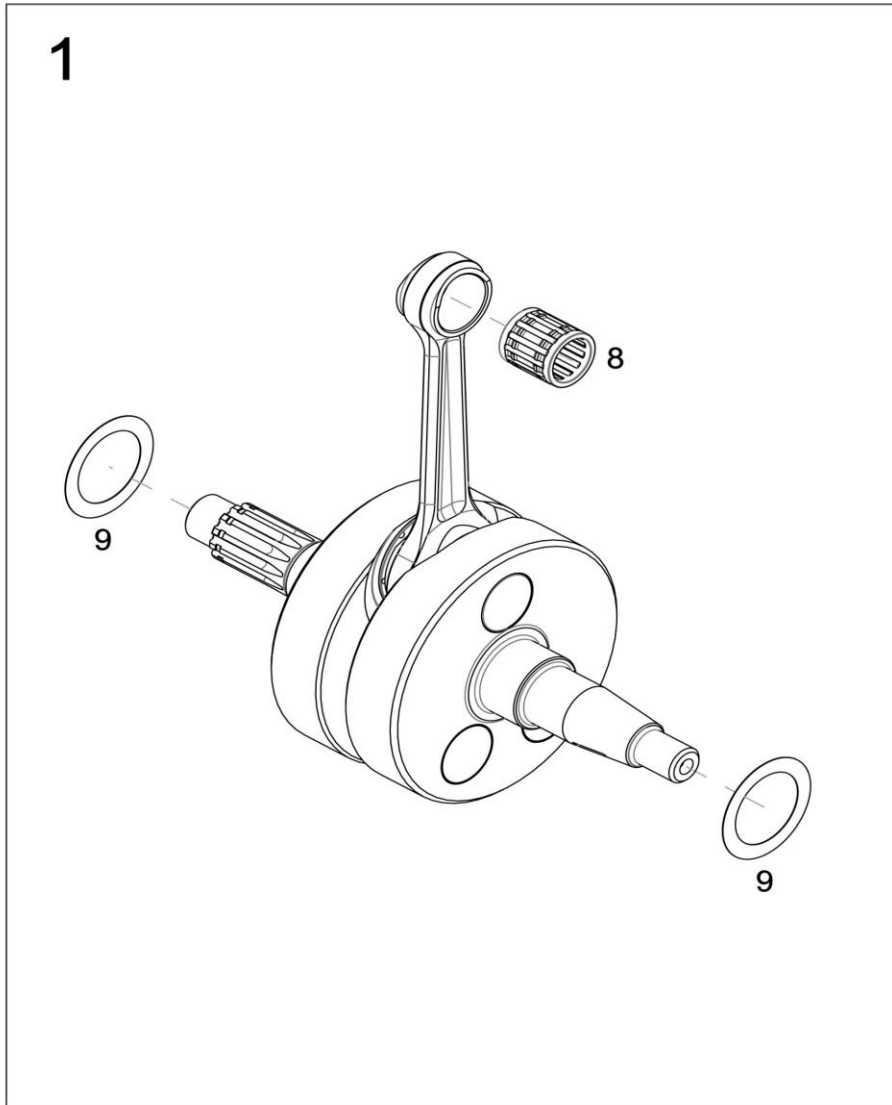
Trust your instinct.

MOTORE COMPLETO/COMPLETE ENGINE KK1



CODE.	DESCRIZIONE/DESCRIPTION
DM110500	MOTORE KK1 STANDARD / KK1 STANDARD ENGINE
DM110700	MOTORE KK1 RACING / KK1 RACING ENGINE

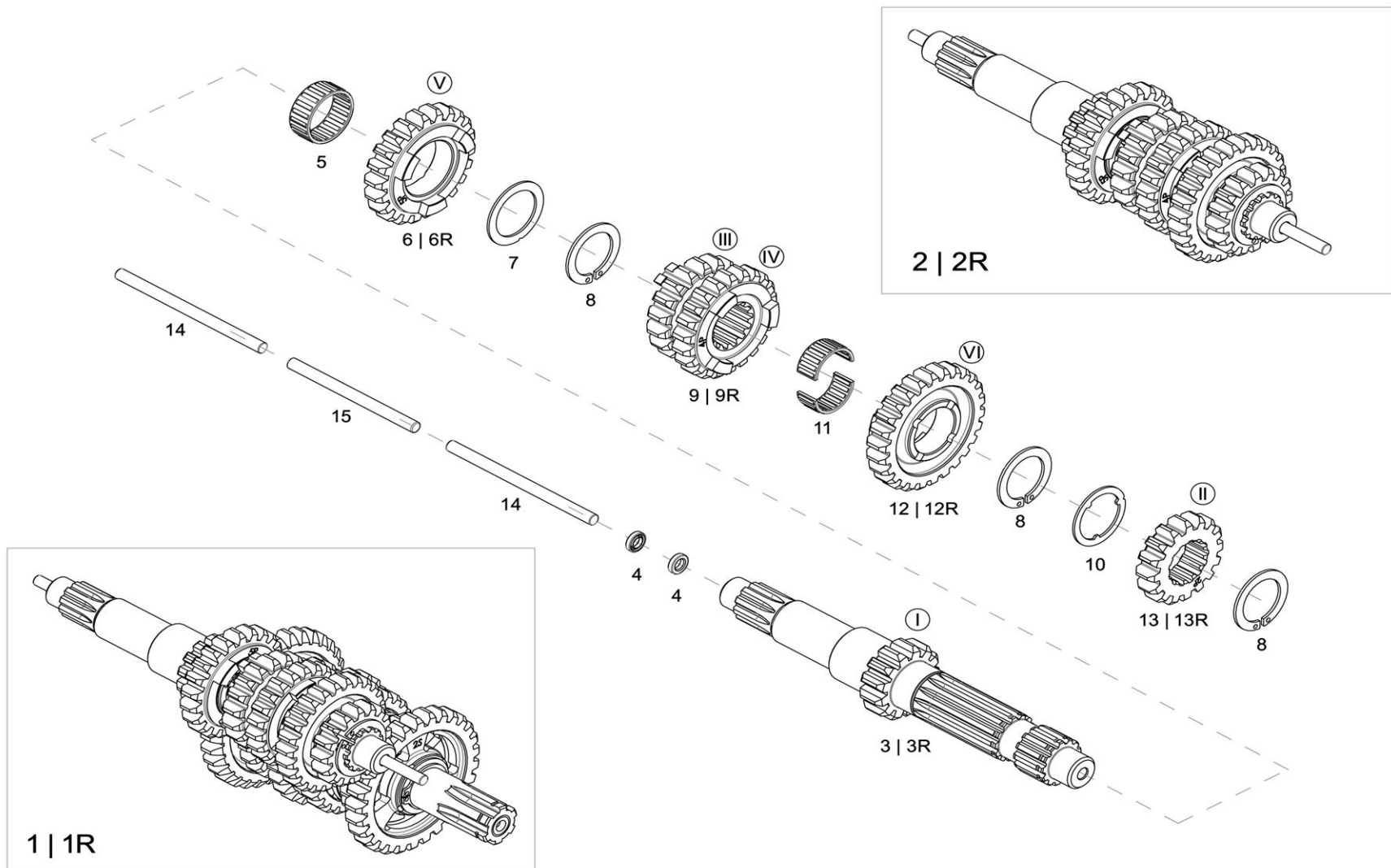
ALBERO MOTORE/CRANKSHAFT



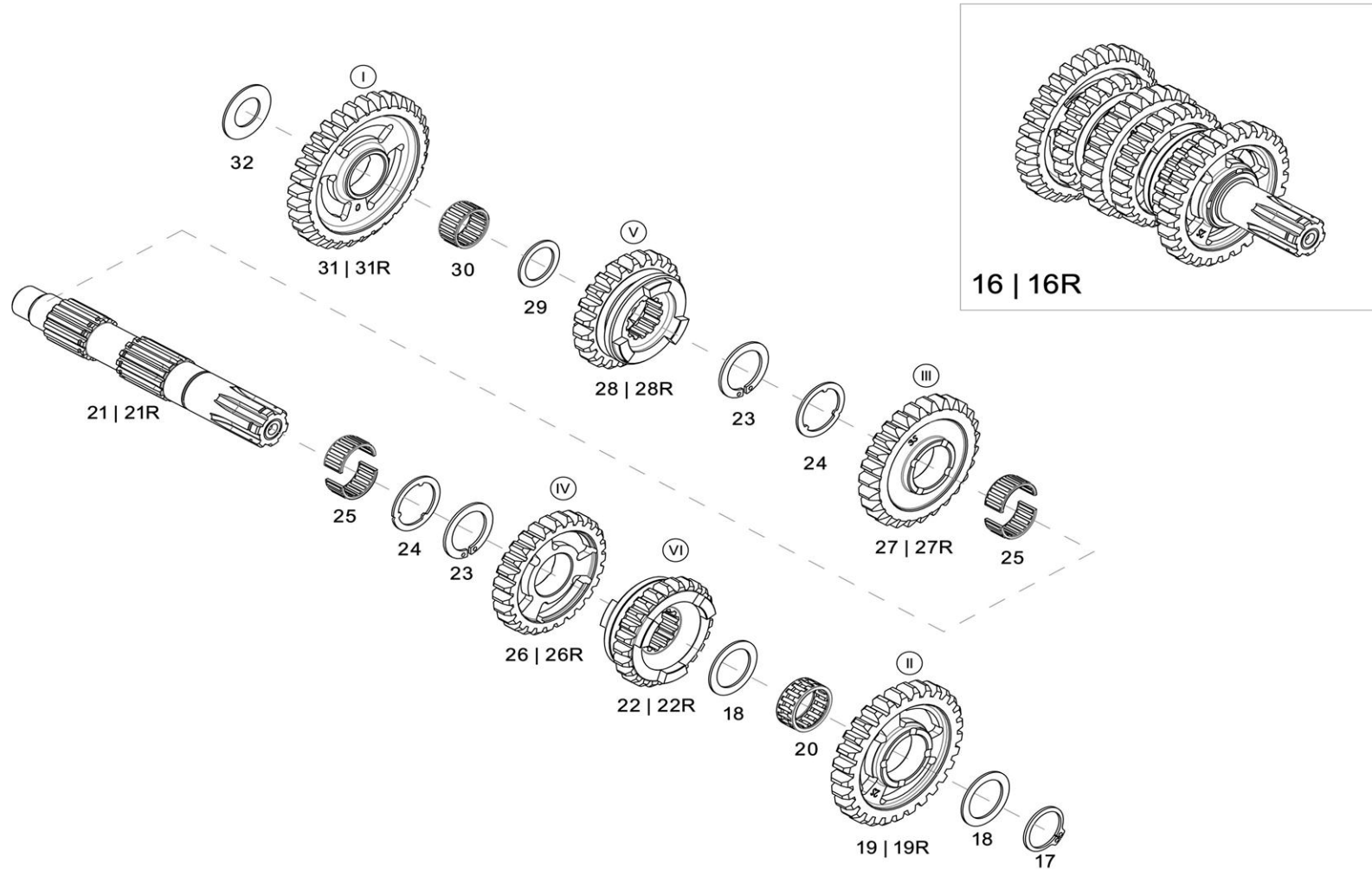
ALBERO MOTORE/CRANKSHAFT KK1

CODE.	FIG.	QT.	DESCRIZIONE/DESCRIPTION
DM110286	1	1	ALBERO MOTORE COMPLETO (COMPRESO DI PASTIGLIE IN TUNGSTENO)/COMPLETE CRANKSHAFT ASS. W/TUNGSTEN PADS
DM110282	2	1	BIELLA COMPLETA/ CONNECTING ROD ASSEMBLY
DM110632	3	1	ASSE ACCOPPIAMENTO COMPLETO/ BIG END PIN ASSEMBLY
DM110288	4	1	ASSE ACCOPPIAMENTO 20 x 50,4/ BIG END PIN 20 X 50.4
DM110305	5	1	GABBIA A RULLINI TESTA DI BIELLA 20 X 26 X 14,7/BIG END NEEDLE ROLLER CAGE 20 X 26 X 14.7
DM110304	6	2	RASAMENTO ARGENTATI TESTA DI BIELLA 20 x 34,7 x 1/BIG END SILVER SHIMS 20 x 34.7 x 1
DM110287	7	1	BIELLA INTERASSE 106/INTERAXIAL CONNECTING ROD 106
DM110386	8	1	GABBIA PIEDE BIELLA 15 x 19 x 19,7/SMALL END NEEDLE ROLLER CAGE 15 x 19 x 19.7
DM110673	9	2	RASAMENTO RALLA CUSCINETTO 25X35X0,2/ BEARING WASHER SHIM 25X35X0.2

CAMBIO/GEARBOX KK1



CAMBIO/GEARBOX KK1



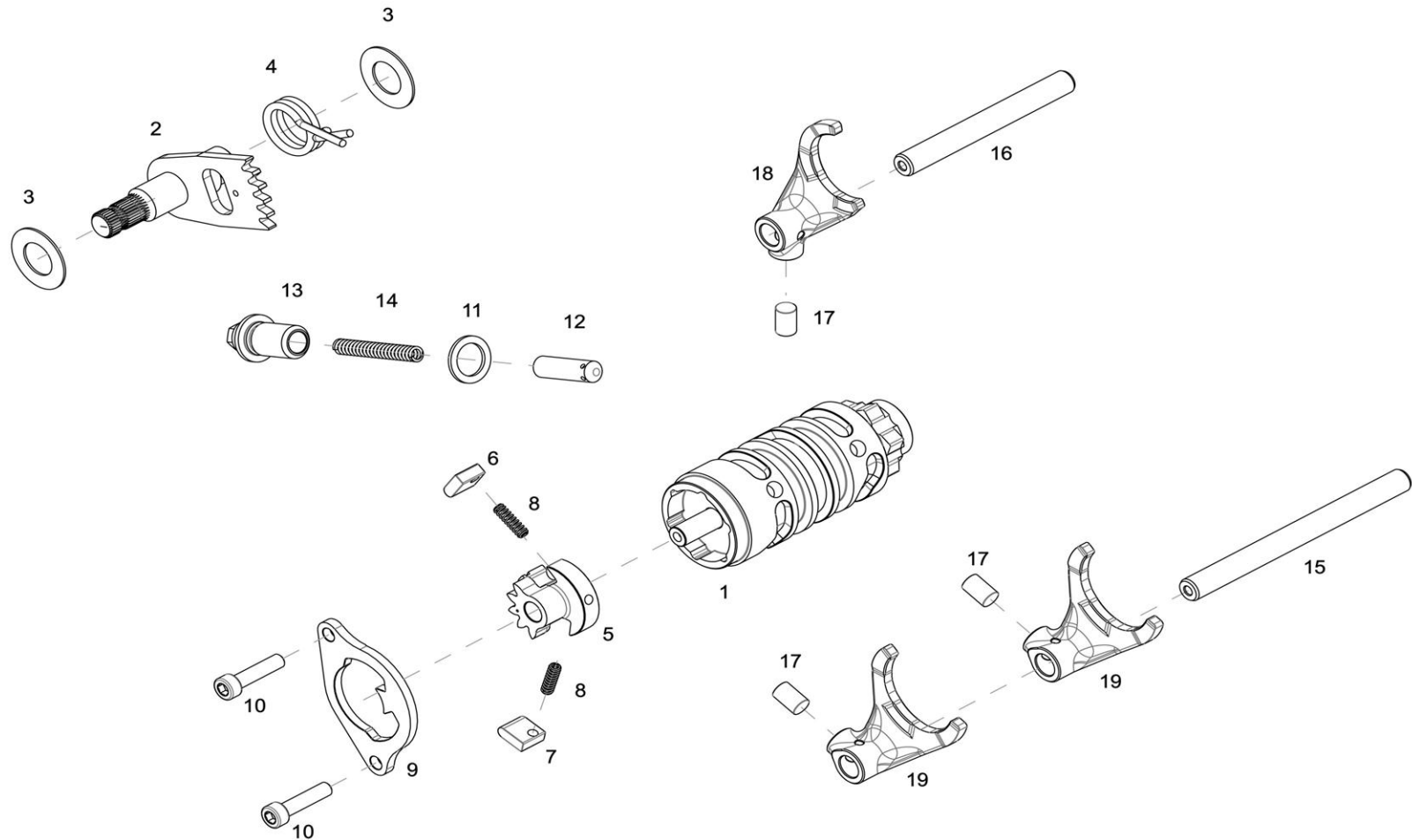
CAMBIO/GEARBOX KK1

CODE.	FIG.	QT.	DESCRIZIONE/DESCRIPTION
DM110545	1	1	CAMBIO COMPLETO / GEARBOX ASSEMBLY
DM110657	1R	1	CAMBIO COMPLETO RACING /GEARBOX ASSEMBLY RACING
DM110546	2	1	ASSIEME ALBERO PRIMARIO / INPUT SHAFT ASSEMBLY
DM110658	2R	1	ASSIEME ALBERO PRIMARIO RACING / INPUT SHAFT ASSEMBLY RACING
DM110547	3	1	ALBERO PRIMARIO Z13 / INPUT SHAFT Z13
DM110659	3R	1	ALBERO PRIMARIO Z13 RACING / INPUT SHAFT Z13 RACING
DM110549	4	2	PARAOLIO 5 x 9 x 2 / OIL SEAL 5 x 9 x 2
DM110133	5	1	GABBI A RULLINI 22 x 26 x 10 / NEEDLE ROLLER CAGE 22 X 26 X 10
DM110325	6	1	INGRANAGGIO QUINTA ALBERO PRIMARIO Z 22 / FIFTH GEAR INPUT SHAFT Z 22
DM110660	6R	1	INGRANAGGIO QUINTA ALBERO PRIMARIO Z 22 RACING / FIFTH GEAR INPUT SHAFT Z 22 RACING
DM110366	7	1	RASAMENTO 22 x 30 x 1,0 / SHIM 22 X 30 X 1.0
DM110126	8	3	ANELLO ELASTICO D.22 /SNAP RING D.22
DM110324	9	1	INGRANAGGIO TERZA / QUARTA ALBERO PRIMARIO Z 18 ; Z 22 / THIRD/FOURTH GEAR INPUT SHAFT Z 18; Z 22
DM110661	9R	1	INGRANAGGIO TERZA / QUARTA ALBERO PRIMARIO Z 18 ; Z 22 RACING / THIRD/FOURTH GEAR INPUT SHAFT Z 18;Z 22 RACING
DM110367	10	1	RASAMENTO DENTATO / SPLINED WASHER
DM110132	11	1	GABBIA RULLINI SCOMPONIBILE 18 x 22 x 10/DISMOUNTABLE NEEDLE ROLLER CAGE 18 X 22 X 10
DM110326	12	1	INGRANAGGIO SESTA ALBERO PRIMARIO Z 27/ SIXTH GEAR INPUT SHAFT Z 27
DM110662	12R	1	INGRANAGGIO SESTA ALBERO PRIMARIO Z 27 RACING / SIXTH GEAR INPUT SHAFT Z 27 RACING
DM110323	13	1	INGRANAGGIO SECONDA ALBERO PRIMARIO Z 16 / SECOND GEAR INPUT SHAFT Z 16
DM110663	13R	1	INGRANAGGIO SECONDA ALBERO PRIMARIO Z 16 RACING / THIRD/FOURTH GEAR INPUT SHAFT Z 16 RACING
DM110550	14	2	ASTA COMANDO FRIZIONE 5 x 80 / CLUTCH CONTROL ROD 5 X 80
DM110487	15	1	ASTA COMANDO FRIZIONE 5 x 70 /CLUTCH CONTROL ROD 5 X 70

CAMBIO/GEARBOX KK1

CODE.	FIG.	QT.	DESCRIZIONE/DESCRIPTION
DM110552	16	1	ASSIEME ALBERO SECONDARIO /OUTPUT SHAFT ASSEMBLY
DM110664	16R	1	ASSIEME ALBERO SECONDARIO RACING / OUTPUT SHAFT ASSEMBLY RACING
DM110503	17	1	ANELLO ELASTICO D. 20 /SNAP RING D. 20
DM110553	18	2	RASAMENTO 20 x 28 x 1/ SHIM 20 x 28 x 1
DM110328	19	1	INGRANAGGIO SECONDA ALBERO SECONDARIO Z 29 SECOND GEAR OUTPUT SHAFT Z 29
DM110665	19R	1	INGRANAGGIO SECONDA ALBERO SECONDARIO Z 29 RACING / SECOND GEAR OUTPUT SHAFT Z 29 RACING
DM110554	20	1	GABBIA RULLINI 20 x 24 x 10 / NEEDLE ROLLER CAGE 20 x 24 x 10
DM110548	21	1	ALBERO SECONDARIO / OUTPUT SHAFT
DM110666	21R	1	ALBERO SECONDARIO RACING / OUTPUT SHAFT RACING
DM110332	22	1	INGRANAGGIO SESTA ALBERO SECONDARIO Z 25 / SIXTH GEAR OUTPUT SHAFT Z 25
DM110667	22R	1	INGRANAGGIO SESTA ALBERO SECONDARIO Z 25 RACING / SIXTH GEAR OUTPUT SHAFT Z 25 RACING
DM110126	23	2	ANELLO ELASTICO D.22 /SNAP RING D.22
DM110367	24	2	RASAMENTO DENTATO / SPLINED SHIM
DM110132	25	2	GABBIA RULLINI SCOMPONIBILE 18 x 22 x 10 /DISMOUNTABLE NEEDLE ROLLER CAGE 18 X 22 10
DM110330	26	1	INGRANAGGIO QUARTA ALBERO SECONDARIO Z 27 FOURTH GEAR OUTPUT SHAFT Z 27
DM110668	26R	1	INGRANAGGIO QUARTA ALBERO SECONDARIO Z 27 RACING / FOURTH GEAR OUTPUT SHAFT Z 27 RACING
DM110329	27	1	INGRANAGGIO TERZA ALBERO SECONDARIO Z 27/ THIRD GEAR OUTPUT SHAFT Z 27
DM110669	27R	1	INGRANAGGIO TERZA ALBERO SECONDARIO Z 27 RACING / THIRD GEAR OUTPUT SHAFT Z 27 RACING
DM110331	28	1	INGRANAGGIO QUINTA ALBERO SECONDARIO Z 23 / FIFTH GEAR OUTPUT SHAFT Z 23
DM110670	28R	1	INGRANAGGIO QUINTA ALBERO SECONDARIO Z 23 RACING / FIFTH GEAR OUTPUT SHAFT Z 23 RACING
DM110368	29	1	RASAMENTO 17 x 24 x 1,0 / SHIM 17 x 24 x 1,0
DM110131	30	1	GABBIA RULLINI 17 x 21 x 10 /NEEDLE ROLLER CAGE 17 X 21 X 10
DM110327	31	1	INGRANAGGIO PRIMA ALBERO SECONDARIO Z 33 / FIRST EAR OUTPUT SHAFT Z 23
DM110671	31R	1	INGRANAGGIO PRIMA ALBERO SECONDARIO Z 33 RACING / FIRST GEAR OUTPUT SHAFT Z 23 RACING
DM110369	32	1	RASAMENTO 15 x 28 x 1/ SHIM 15 x 28 x 1

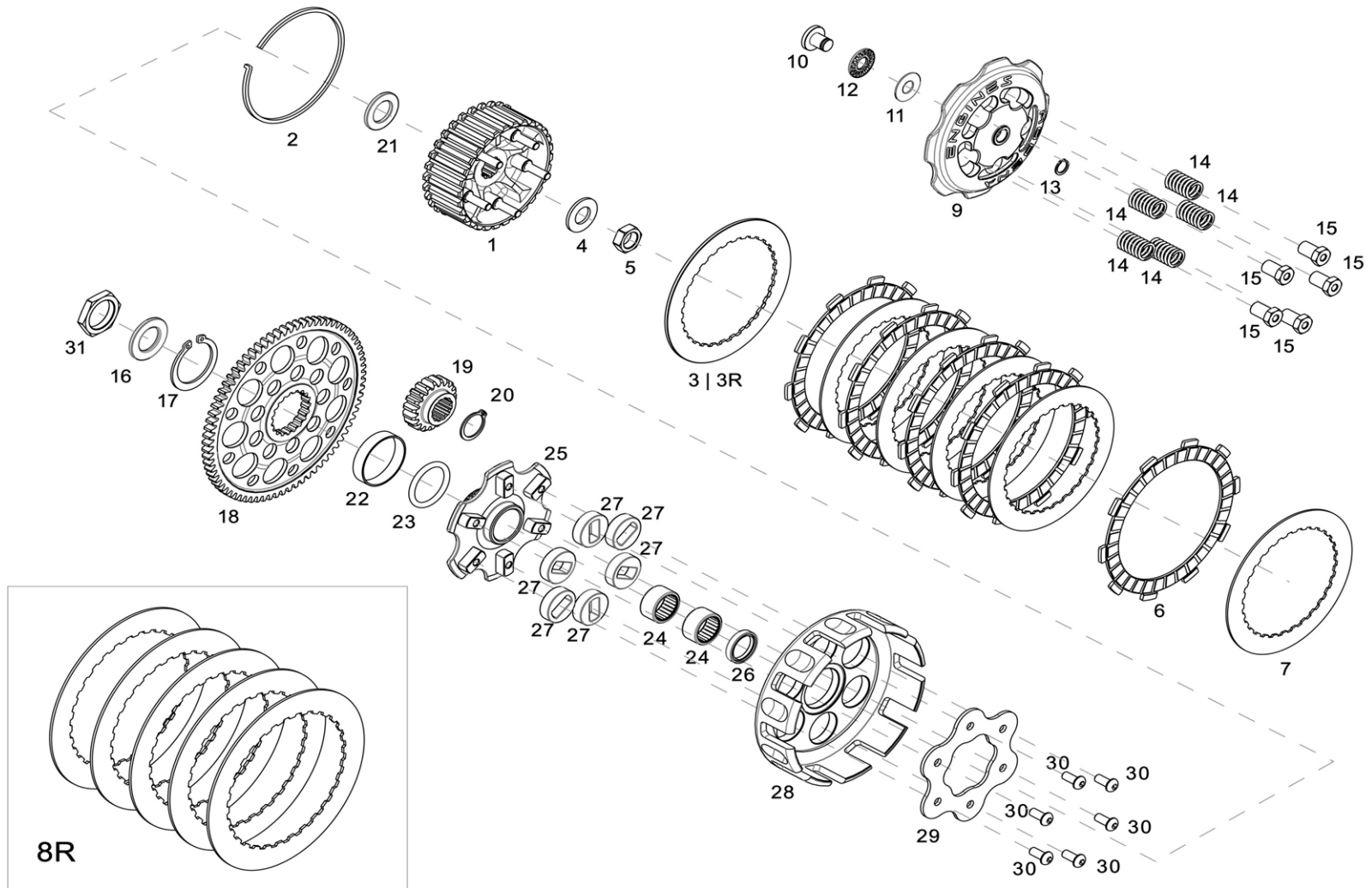
SISTEMA COMANDO CAMBIO/GEARBOX SHIFT DRIVE KK1



SISTEMA COMANDO CAMBIO/GEARBOX SHIFT DRIVE KK1

CODE.	FIG.	QT.	DESCRIZIONE /DESCRIPTION
DM110505	1	1	DESMODROMICO CON SPINA / SHIFT DRUM PIVOT
DM110393	2	1	ALBERINO COMANDO CAMBIO / SHIFTING AXLE ASSEMBLY
DM110369	3	2	RASAMENTO 15 x 28 x 1 / SHIM 15 x 28 x 1
DM110507	4	1	MOLLA SELETTORE / SHIFTING SPRING
DM110141	5	1	INGRANAGGIO CONDOTTO SELETTORE / SELECTOR DRIVEN GEAR
DM110272	6	1	LEVETTA SUPERIORE SELETTORE / SELECTOR UPPER SHIFTING LEVER
DM110273	7	1	LEVETTA INFERIORE SELETTORE / SELECTOR LOWER SHIFTING LEVER
DM110274	8	2	MOLLA LEVETTE SELETTORE / SELECTOR LEVER SPRING
DM110163	9	1	PIASTRINA DESMODROMICO / SHIFT DRUM PLATE
DM110159	10	2	VITE TCEI M6X25 / TCEI SCREW M6X25
DM110221	11	1	RONDELLA 14 X 20 X 1,5 ALLUMINIO /WASHER 14 X 20 X 1.5 ALUMINIUM
DM110238	12	1	PUNTALE FERMO DESMODROMICO /SHIFT DRUM STOPPER PUSH ROD
DM110239	13	1	SEDE PUNTALE FERMO DESMODROMICO / SHIFT DRUM STOPPER SEAT
DM110593	14	1	MOLLA PUNTALE FERMO DESMODROMICO / SHIFT DRUM STOPPER SPRING
DM110165	15	1	ASTA FORCHETTE 1/3 E 4/2 / FORK ROD 1/3 AND 4/2 SPEED
DM110166	16	1	ASTA FORCHETTA 5/6 / FORK ROD 5/6 SPEED
DM110167	17	3	RULLO 8 x 12 / ROLLER 8 X 12
DM110301	18	1	FORCHETTA 5/6 / FORK 5/6
DM110302	19	2	FORCHETTA 1/3 E 4/2 FORK 1/3 AND 4/2 SPEED

FRIZIONE/CLUTCH KK1



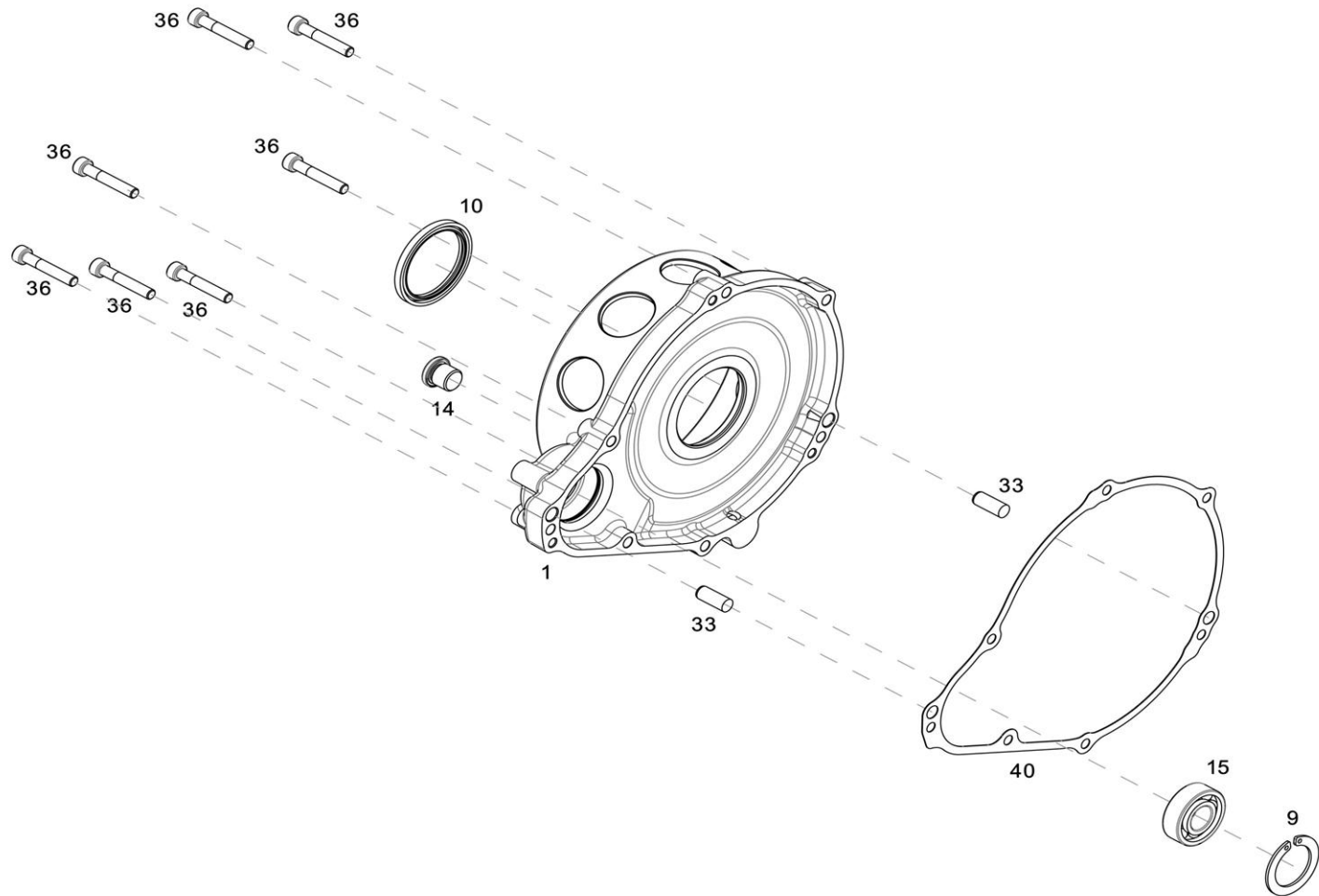
FRIZIONE/CLUTCH KK1

CODE.	FIG.	QT.	DESCRIZIONE / DESCRIPTION
DM110510	1	1	MOZZETTO FRIZIONE (COMPLETO DI VITI) / CLUTCH HUB COMPLETE W/SCREWS
DM110511	2	1	ANELLO ELASTICO MOZZETTO FRIZIONE / CLUTCH HUB SNAP RING
DM110512	3	1	DISCO FRIZIONE SPESS. 4 mm / CLUTCH DISK TH.4 mm
DM110648	3R	1	DISCO FRIZIONE ALLUMINIO SPESS. 4 mm RACING / ALUMINIUM CLUTCH DISK TH.4 mm RACING
DM110513	4	1	MOLLA TAZZA 28x14,2x1,5 / DISK SPRING 28x14.2x1.5
DM110514	5	1	DADO M14 x 1 / NUT M14 X 1
DM110515	6	5	DISCO FRIZIONE RIVESTITO / COATED CLUTCH DISK
DM110516	7	5	DISCO FRIZIONE LISCIO / UNCOATED CLUTCH DISK
DM110647	8R	1	KIT N.5 DISCHI FRIZIONE ALLUMINIO LISCI RACING /KIT W/5 UNMACHINED ALUMINIUM CLUTCH DISCS RACING
DM110517	9	1	PIATTO SPINGIDISCO / CLUTCH PRESSURE PLATE
DM110518	10	1	PUNTALE FRIZIONE / CLUTCH DRIVE CAP
DM110270	11	1	RALLA ASSIALE AS1024 / AXIAL WASHER AS1024
DM110271	12	1	CUSCINETTO ASSIALE A RULLINI AXK1024 / AXIAL NEEDLE ROLLER BEARING AXK1024
DM110276	13	1	ANELLO ELASTICO D.10 / SNAP RING D.10
DM110519	14	5	MOLLA FRIZIONE / CLUTCH SPRING
DM110520	15	5	DADO MOLLA FRIZIONE / CLUTCH SPRING NUT

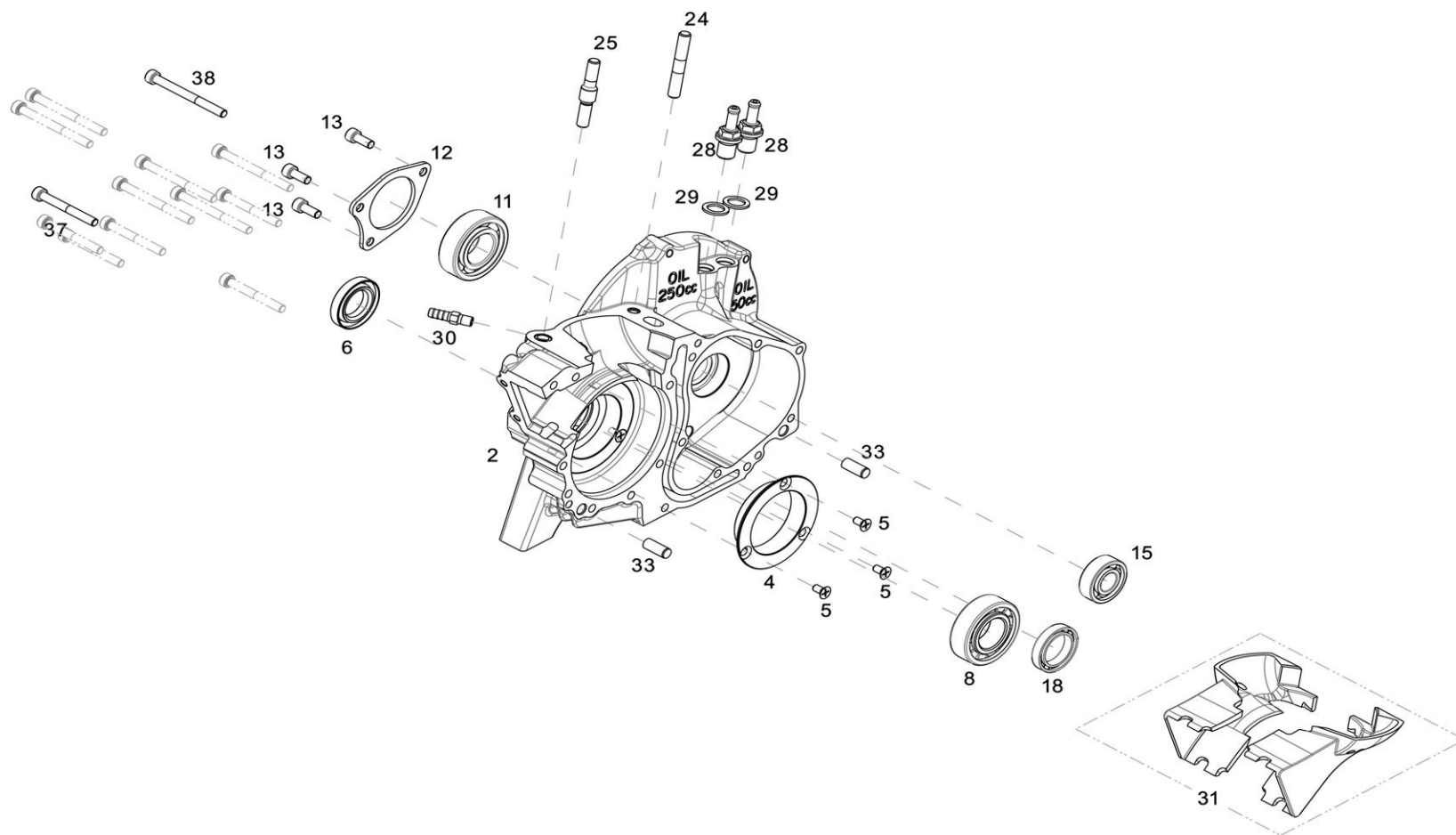
FRIZIONE/CLUTCH KK1

CODE.	FIG.	QT.	DESCRIZIONE / DESCRIPTION
DM110521	16	1	RALLA 20 x 34,7 x 2,75 / WASHER 20 x 34.7 x 2.75
DM110522	17	1	ANELLO ELASTICO D.35 / SNAP RING D.35
DM110523	18	1	CORONA PRIMARIA Z 75 / PRIMARY DRIVE WHEEL Z 75
DM110524	19	1	PIGNONE PRIMARIA Z 19 / PRIMARY DRIVE PINION Z 19
DM110503	20	1	ANELLO ELASTICO D.20 / SNAP RING D.20
DM110525	21	1	RALLA 18 x 30,7 x 2,75 / WASHER 30.7 X 2.75
DM110526	22	1	BOCCOLA FLANGIA PARASTRAPPI FRIZIONE / CLUTCH FLANGE BUSH
DM110527	23	1	O-RING 30 x 4 / O-RING 30 x 4
DM110528	24	2	ASTUCCIO A RULLINI 20 x 26 x 10 / NEEDLE ROLLER DRAWN CUP 20 x 26 x 10
DM110529	25	1	FLANGIA PARASTRAPPI FRIZIONE / FLEXIBLE COUPLING FLANCE
DM110530	26	1	PARAOILIO 20x26x4 / OIL SEAL 20X26X24
DM110531	27	6	GOMMINO PARASTRAPPI FRIZIONE / CLUTCH GROMMET
DM110532	28	1	CAMPANA FRIZIONE / CLUTCH BASKET
DM110533	29	1	COPRIGIUNTO PARASTRAPPI FRIZIONE / CLUTCH FLANGE COVER
DM110534	30	6	VITE TBEI M6 x 14 / TBEI SCREW M6 X 14
DM110504	31	1	DADO M25 x 1 / NUT M25 X 1

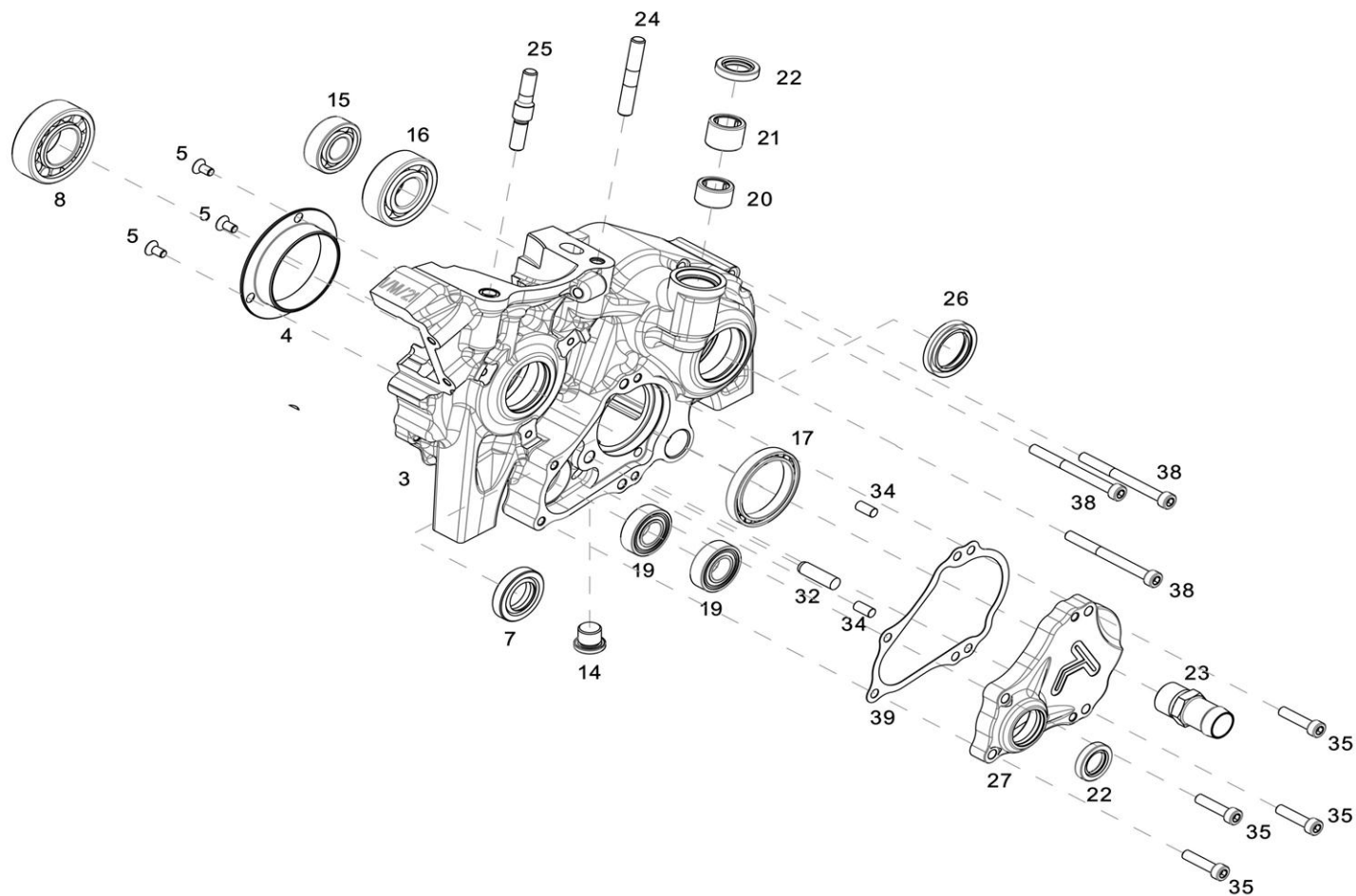
BASAMENTO/CRANKCASE KK1



BASAMENTO/CRANKCASE KK1



BASAMENTO/CRANKCASE KK1



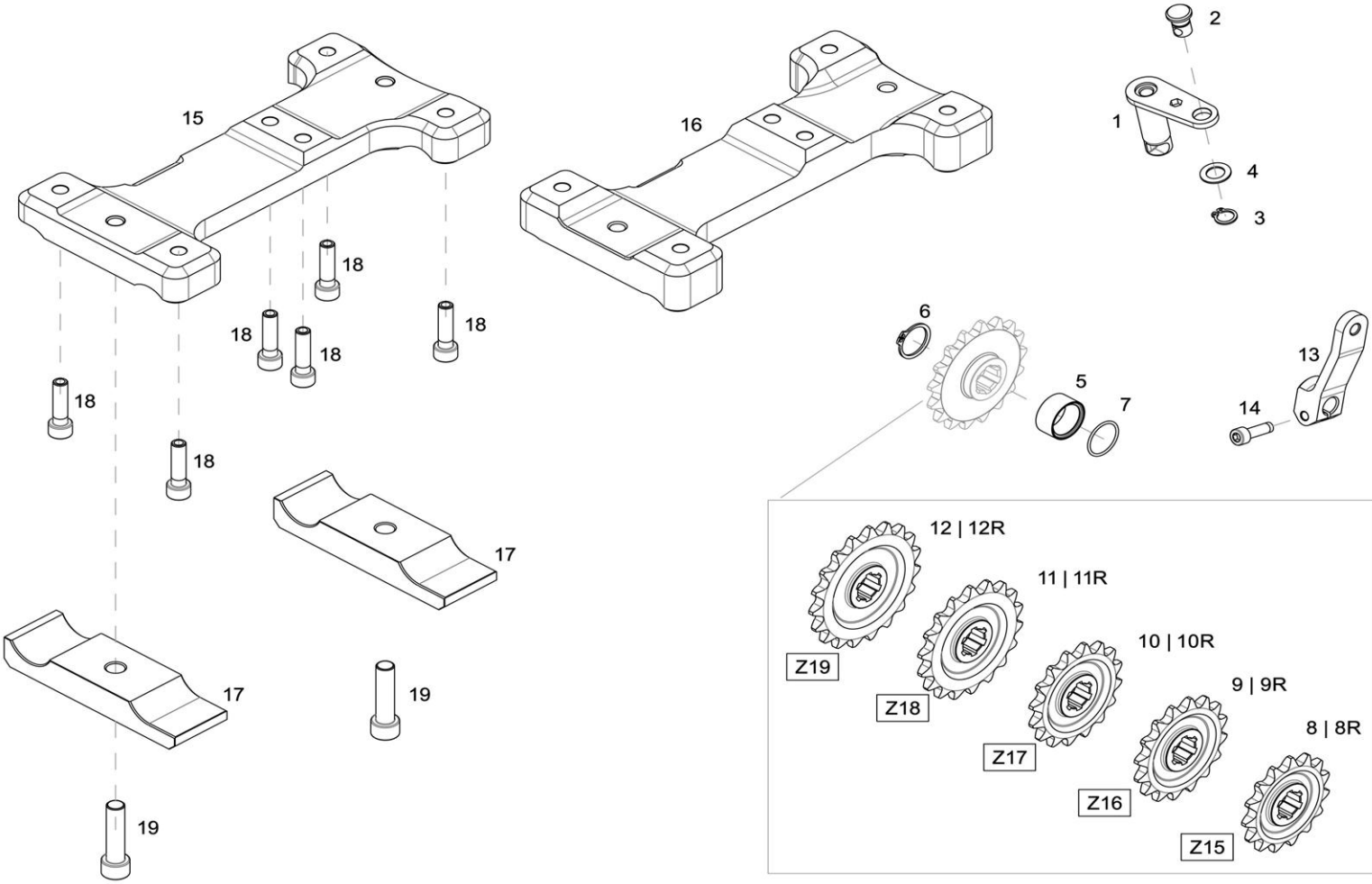
BASAMENTO/CRANKCASE KK1

CODE.	FIG.	QT.	DESCRIZIONE/DESCRIPTION
DM110502	1	1	COPERCHIO FRIZIONE /PRIMARY DRIVE COVER
DM110634	2	1	CARTER CENTRALE LATO PRIMARIA (CON BOCCOLA CUSCINETTO) /CRANKCASE , PRIMARY DRIVE SIDE W/ BEARING BUSHING
DM110635	3	1	CARTER CENTRALE LATO ACCENSIONE (CON BOCCOLA CUSCINETTO) /CRANKCASE, IGNITION SIDE W/BEARING BUSHING
DM110568	4	2	BOCCOLA CUSCINETTO 52 x 56 x 14,7 / BEARING BUSHING 52 x 56 x 14.7
DM110590	5	6	VITE TSP M5 x 12 PHILLIPS / TSP SCREW M5 x 12 PHILLIPS
DM110181	6	1	PARAOLIO 22 x 40 x 7 / OIL SEAL 22 X 40 X 7
DM110290	7	1	PARAOLIO 20 x 35 x 7 / OIL SEAL 20 x 35 x 7
DM110281	8	2	CUSCINETTO A RULLI SKF BC1-1442B / ROLLER BEARING SKF BC1-1442B
DM110189	9	1	ANELLO ELASTICO D.35 (X FORO) /SNAP RING D.35 (FOR HOLES)
DM110577	10	1	PARAOLIO 42 x 52 x 4 /OIL SEAL 42 x 52 x 4
DM110182	11	1	CUSCINETTO A SFERE 6205 RSH C3 (25 x 52 x 15) / BALL BEARING 6205 RSH C3 (25 x 52 x 15)
DM110506	12	1	PIASTRINA CUSCINETTO (ALBERO PRIMARIO, LATO PRIMARIA) / BEARING PLATE (INPUT SHAFT, PRIMARY DRIVE SIDE)
DM110455	13	3	VITE TCEI M6 x 14 / TCEI SCREW M6 x 14
DM110359	14	2	TAPPO MAGNETICO (1/4 GAS) / MAGNETIC PLUG (1/4 GAS)
DM110183	15	3	CUSCINETTO A SFERE 6202 TN9 C4 (15 x 35 x 11) / BALL BEARING 6202 TN9 C4 (15 x 35 x 11)
DM110559	16	1	CUSCINETTO A SFERE 6204 ETN9 C3 (20 x 47 x 14) / BALL BEARING 6204 ETN9 C3 (20 x 47 x 14)
DM110479	17	1	CUSCINETTO A SFERE 61808 2RS1 C3 (40 x 52 x 7) / BALL BEARING 61808 2RS1 C3 (40 x 52 x 7)
DM110156	18	1	CUSCINETTO A SFERE 61805 2RS1 C3 (25 x 37 x 7) / BALL BEARING 61805 2RS1 C3 (25 x 37 x 7)
DM110362	19	2	CUSCINETTO A SFERE 6002 2RSL C3 (15 x 32 x 9) /BALL BEARING 6002 2RSL C3 (15 x 32 x 9)
DM110149	20	1	ASTUCCIO A RULLINI HK1512 / DRAWN CUP HK1512

BASAMENTO/CRANKCASE KK1

CODE.	FIG.	QT.	DESCRIZIONE/DESCRIPTION
DM110277	21	1	ASTUCCIO A RULLINI HK1516 /NEEDLE ROLLER DRAWN CUP HK1516
DM110150	22	2	PARAOLIO 15 x 25 x 5 / OIL SEAL 15 x 25 x 5
DM110170	23	1	RACCORDO ACQUA M20x1,5 / HOSE FITTING M20x1.5
DM110235	24	2	PRIGIONIERO CILINDRO M8 x 53 (LATO SCARICO) / CYLINDER STUD M8 x 53 (EXHAUST SIDE)
DM110236	25	2	PRIGIONIERO CILINDRO M8 x 55 (LATO ASPIRAZIONE) / CYLINDER STUD M8 x 55 (INLET SIDE)
DM110508	26	1	PARAOLIO 25 x 37 x 6 / OIL SEAL 25 x 37 x 6
DM110151	27	1	COPERCHIETTO COMANDO CAMBIO / SHIFTING COVER
DM110227	28	2	SFIATO OLIO M12 x 1,5 / OIL BREATHER M12 x 1.5
DM110231	29	2	RONDELLA 12 X 18 X 1,5 ALLUMINIO / WASHER 12 X 18 X 1.5 ALUMINIUM
DM110557	30	1	RACCORDO DEPRESSIONE M7 /VACUM HOSE FITTING M7
DM110594	31	1	KIT INSERTO CARTER MOTORE / CRANKCASE INSERT KIT
DM110147	32	1	SPINA CENTRAGGIO 8 x 28 / DOWEL PIN 8 x 28
DM110233	33	4	SPINA CENTRAGGIO 8 x 20 / DOWEL PIN 8 x 20
DM110278	34	2	SPINA CENTRAGGIO 6 x 12 / DOWEL PIN 6 x 12
DM110159	35	4	VITE TCEI M6X25 / TCEI SCREW M6X25
DM110160	36	7	VITE TCEI M6X35 / TCEI SCREW M6X35
DM110161	37	6	VITE TCEI M6X50 / TCEI SCREW M6X50
DM110162	38	10	VITE TCEI M6X65 / TCEI SCREW M6X65
DM110431	39	1	GUARNIZIONE COPERCHIO SELETTORE / SHIFTING COVER GASKET
DM110340	40	1	GUARNIZIONE COPERCHIO PRIMARIA / PRIMARY DRIVE COVER GASKET

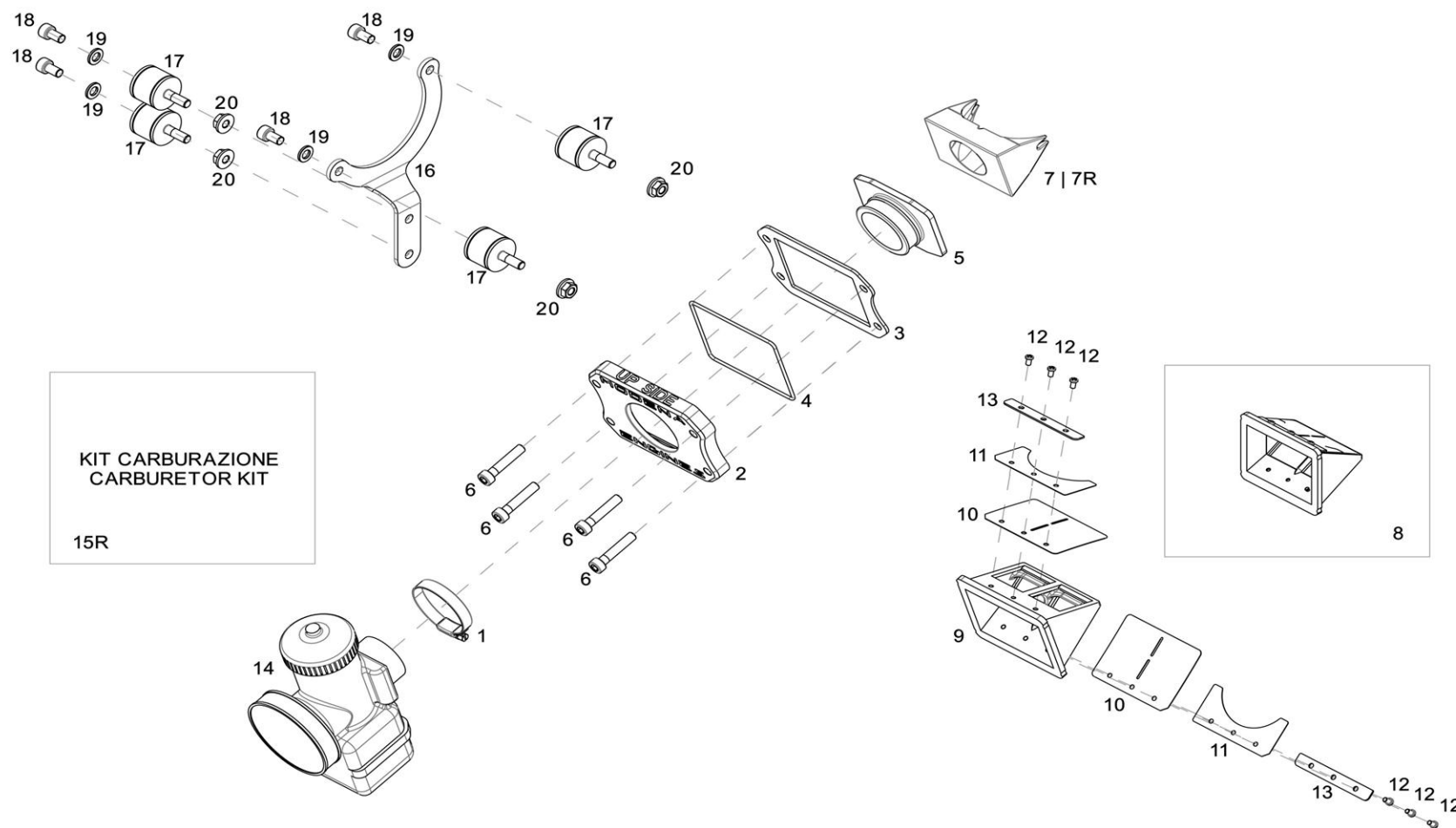
COMPLETAMENTO MOTORE/ENGINE COMPLETION KK1



COMPLETAMENTO MOTORE/ENGINE COMPLETION KK1

CODE.	FIG.	QT.	DESCRIZIONE/DESCRIPTION
DM110397	1	1	ALBERINO COMANDO FRIZIONE / CLUTCH AXLE
DM110540	2	1	SEDE BARILOTTO CAVO FRIZIONE / CLUTCH CABLE SEAT
DM110276	3	1	ANELLO ELASTICO D.10 / SNAP RING D. 10
DM110556	4	1	RASAMENTO 10,2 x 16,8 x 1 / WASHER 10.2 x 16.8 x 1
DM110535	5	1	BOCCOLA PIGNONE / SPROCKET BUSH
DM110503	6	1	ANELLO ELASTICO D. 20 / SNAP RING D.20
DM110122	7	1	O RING 18,77 x 1,78 / O-RING 18.77 x 1.78
DM110415	8	1	PIGNONE Z 15 STANDARD / SPROCKET Z 15 STANDARD
DM110416	9	1	PIGNONE Z 16 STANDARD / SPROCKET Z 16 STANDARD
DM110417	10	1	PIGNONE Z 17 STANDARD / SPROCKET Z 17 STANDARD
DM110418	11	1	PIGNONE Z 18 STANDARD / SPROCKET Z 18 STANDARD
DM110419	12	1	PIGNONE Z 19 STANDARD / SPROCKET Z 19 STANDARD
DM110687	8R	1	PIGNONE Z 15 RACING / SPROCKET Z 15 RACING
DM110688	9R	1	PIGNONE Z 16 RACING / SPROCKET Z 16 RACING
DM110689	10R	1	PIGNONE Z 17 RACING / SPROCKET Z 17 RACING
DM110690	11R	1	PIGNONE Z 18 RACING / SPROCKET Z 18 RACING
DM110691	12R	1	PIGNONE Z 19 RACING / SPROCKET Z 19 RACING
DM110464	13	1	LEVA COMANDO CAMBIO / GEARBOX LEVER
DM110400	14	1	VITE TCEI M6 X 20 / TCEI SCREW M6 X 20
DM110615	15	1	PIASTRA MOTORE ALTEZZA STANDARD / ENGINE MOUNTING PLATE (STANDARD HEIGHT)
DM110633	16	1	PIASTRA MOTORE ALTEZZA STANDARD + 8mm / ENGINE MOUNTING PLATE (STANDARD HEIGHT + 8mm)
DM110597	17	2	CAVALLOTTO PIASTRA MOTORE / ENGINE PLATE MOUNTING CLAMP
DM110398	18	6	VITE TCEI M8 X 30 / TCEI SCREW M8 X 30
DM110592	19	2	VITE TCEI M10 x 50 / TCEI SCREW M10 X 50

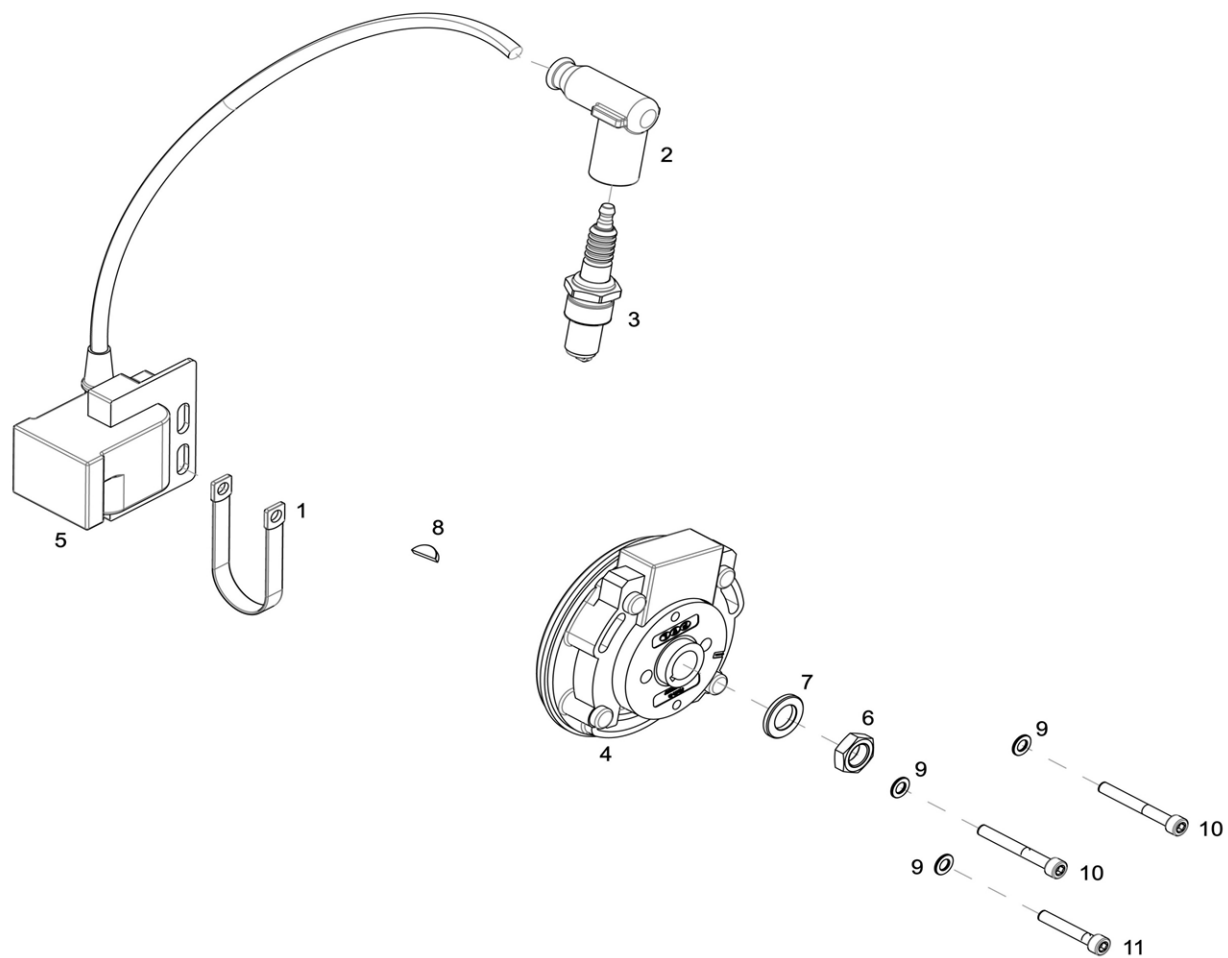
ALIMENTAZIONE/INTAKE SYSTEM KK1



ALIMENTAZIONE/INTAKE SYSTEM KK1

CODE.	FIG.	QT.	DESCRIZIONE/DESCRIPTION
DM110578	1	1	FASCETTA CARBURATORE / CARBURETOR HOSE CLAMP
DM110538	2	1	FLANGIA PACCO LAMELLARE / REED VALVE CAGE FLANGE
DM110381	3	1	GURNIZIONE PACCO LAMELLARE / REED VALVE CAGE GASKET
DM110407	4	1	O-RING 80 x 2 / O-RING 80 x 2
DM110537	5	1	COLLETORE ASPIRAZIONE /INTAKE MANIFOLD
DM110466	6	4	VITE TCEI M6 X 30 / TCEI SCREW M6 X 30
DM110406	7	1	INSERTO PACCO LAMELLARE / REED VALVE CAGE INSERT
DM110409	7R	1	INSERTO PACCO LAMELLARE RACING / REED VALVE CAGE INSERT RACING
DM110423	8	1	ASSIEME PACCO LAMELLARE / REED VALVE CAGE ASSEMBLY
DM110364	9	1	PACCO LAMELLARE NUDO / REEDS CAGE
DM110401	10	2	LAMELLA / REED VALVE PETAL
DM110402	11	2	BALESTRINO LAMELLA / REED VALVE PETAL STIFFNER
DM110404	12	6	VITE M3 x 5 / SCREW M3 X 5
DM110606	13	2	PIASTRINA BLOCCAGGIO LAMELLA / REED VALVE PETAL LOCKING
DM110408	14	1	CARBURATORE VHS 30 CS DELL' ORTO (TARATURA STANDARD KK1)/CARBURETOR VHS 30 CS DELL' ORTO (KK1 STANDARD CALIBRATION)
DM110672	15R	1	KIT CARBURAZIONE RACING / CARBURETOR ASSEMBLY KIT RACING
DM110410	16	1	SUPPORTO POMPA BENZINA (MOD. MIKUNI) / FUEL PUMP SUPPORT (MOD. MIKUNI)
DM110621	17	4	SILENT BLOCK M6 SUPPORTO POMPA BENZINA / M6 SILENT BLOCK FUEL PUMP SUPPORT
DM110622	18	4	VITE TCEI M6 x 10 / TCEI SCREW M6 x 10
DM110623	19	4	RONDELLA 6,4 x 12 x 1,6 / PLAIN WASHER 6.4 x 12 x 1.6
DM110424	20	4	DADO FLANGIATO M6 / FLANGE NUT M6

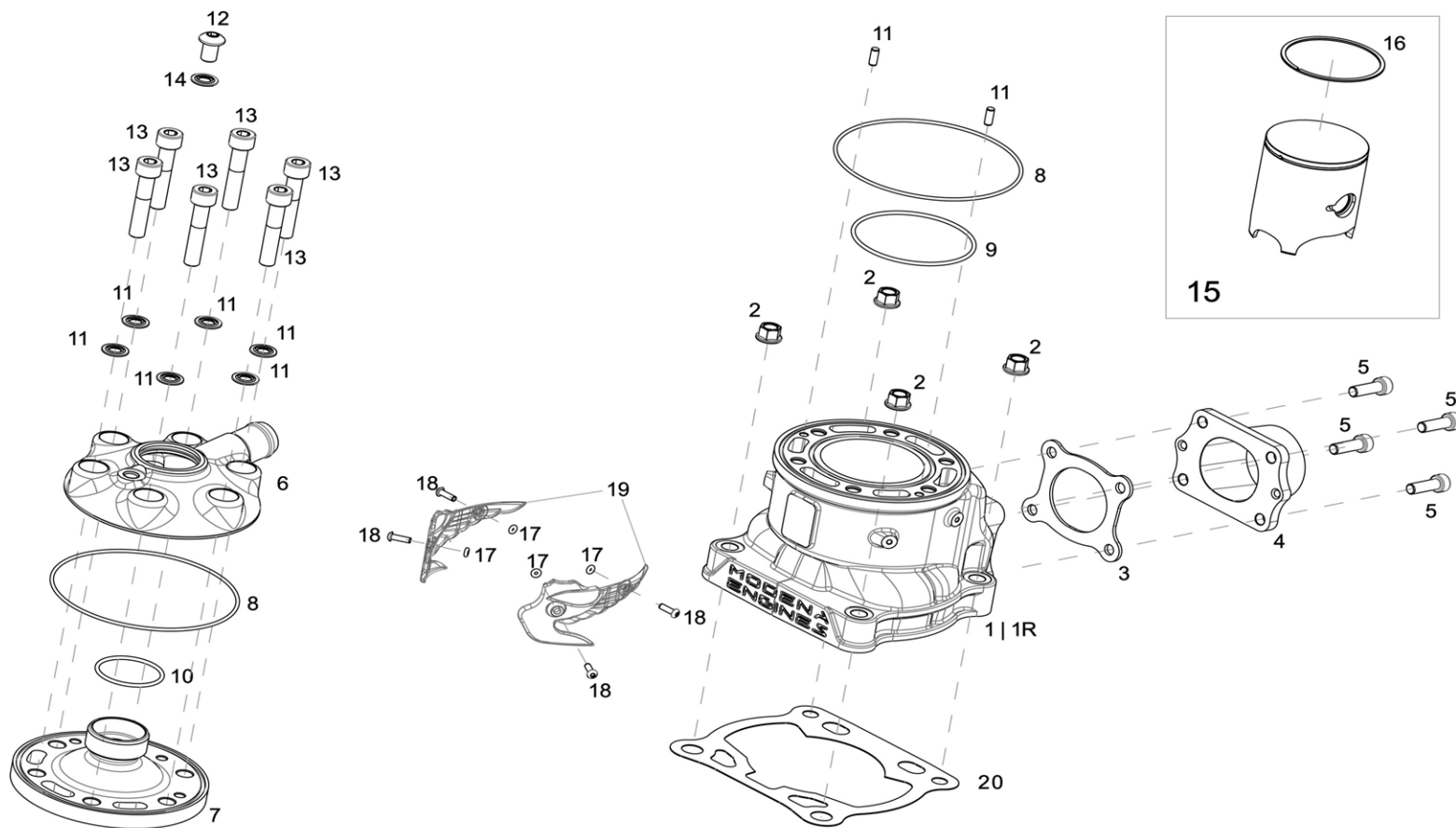
ACCENSIONE/IGNITION KK1



ACCENSIONE/IGNITION KK1

CODE.	FIG.	QT.	DESCRIZIONE/DESCRIPTION
DM110429	1	1	CORDINO MASSA / EARTH CABLE
DM110422	2	1	PIPETTA CANDELA PVL / PVL SPARK PLUG COVER
DM110421	3	1	CANDELA NGK B10 EG / SPARK PLUG NGK B10 EG
DM110636	4	1	ACCENSIONE PVL (STATORE E ROTORE) / PVL IGNITION (STATOR & ROTOR)
DM110195	5	1	BOBINA ACCENSIONE PVL 105 458 / IGNITION COIL PV 105 458
DM110155	6	1	DADO ROTORE ACCENSIONE (M12 x 1.25) /IGNITION ROTOR NUT (M12 x 1.25)
DM110563	7	1	RONDELLA DADO ROTORE / ROTOR NUT WASHER
DM110257	8	1	LINGUETTA AMERICANA 3 x 5 / WOODRUFF KEY 3 X 5
DM110427	9	3	RONDELLA 5,3 x 10 x 2 / PLAIN WASHER 5.3 x 10 x 2
DM110435	10	2	VITE TCEI M5 x 40 / TCEI SCREW M5 x 40
DM110434	11	1	VITE TCEI M5 x 30 /TCEI SCREW M5 X 30

CILINDRO E TESTA/HEAD AND CYLINDER KK1



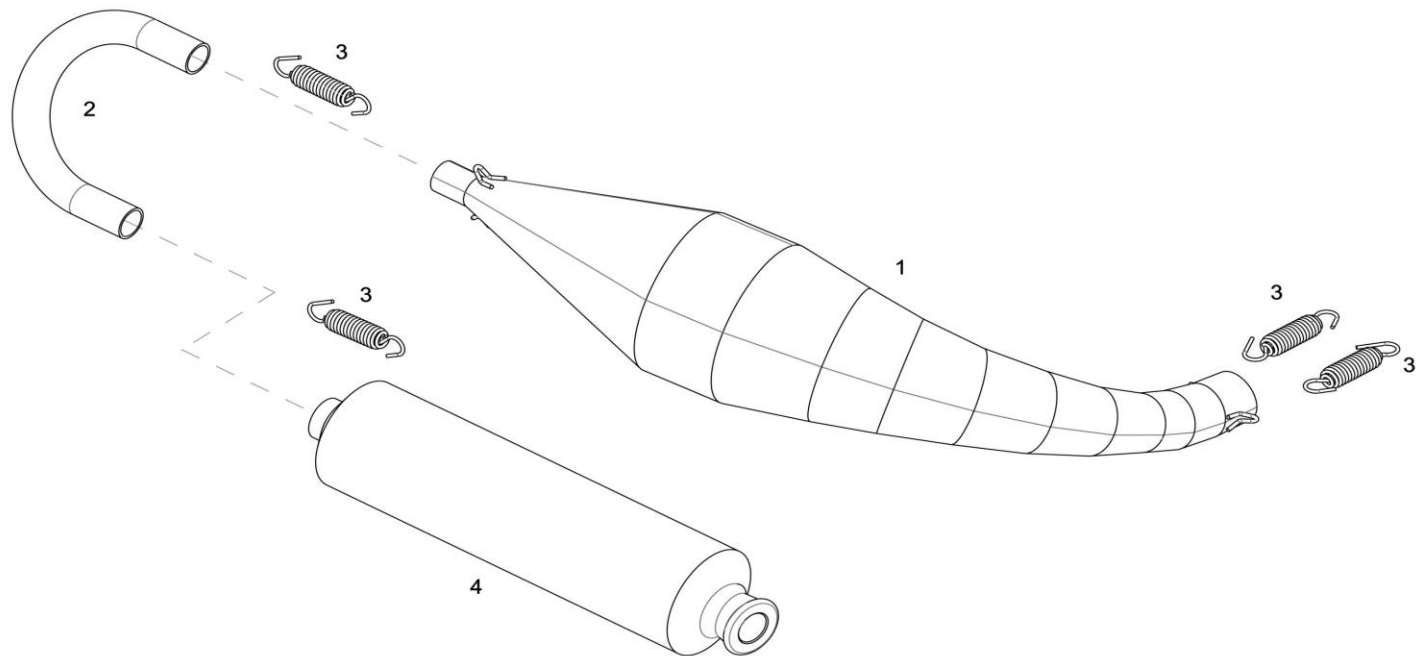
CILINDRO E TESTA/HEAD AND CYLINDER KK1

CODE.	FIG.	QT.	DESCRIZIONE/DESCRIPTION
DM110471	1	1	CILINDRO /CYLINDER
DM110472	1R	1	CILINDRO RACING / CYLINDER RACING
DM110420	2	4	DADO FLANGIATO M8 / SHOULDER NUT M8
DM110361	3	1	GUARNIZIONE COLLETTORE DI SCARICO / EXHAUST MANIFOLD GASKET
DM110205	4	1	COLLETTORE DI SCARICO /EXHAUST MANIFOLD
DM110400	5	4	VITE TCEI M6 X 20 / TCEI SCREW M6X20
DM110459	6	1	COPERCHIO TESTA / CYLINDER HEAD COVER
DM110566	7	1	INSERTO TESTA STANDARD / CYLINDER HEAD INSERT (STANDARD)
DM110642	7	1	INSERTO TESTA STANDARD + 0,1 mm / CYLINDER HEAD INSERT (STANDARD + 0.1 mm)
DM110643	7	1	INSERTO TESTA STANDARD + 0,2 mm / CYLINDER HEAD INSERT (STANDARD + 0.2 mm)
DM110644	7	1	INSERTO TESTA STANDARD - 0,1 mm / CYLINDER HEAD INSERT (STANDARD - 0.1 mm)
DM110645	7	1	INSERTO TESTA STANDARD - 0,2 mm / CYLINDER HEAD INSERT (STANDARD - 0.2 mm)
DM110335	8	2	O-RING 95 x 1,78 / O-RING 95 x 1.78
DM110202	9	1	O-RING 60 x 1,78 / O-RING 60 x 1,78
DM110203	10	1	O-RING 28 x 2 / O-RING 28 x 2
DM110338	11	2	SPINA CENTRAGGIO 4 x 10 INOX / DOWEL PIN 4 x10 INOX
DM110450	12	1	VITE TBEI M8 X 12 / TBEI SCREW M8 x 12
DM110449	13	6	VITE TCEI M8 x 40 / TBEI SCREW M8 x40

CILINDRO E TESTA/HEAD AND CYLINDER KK1

CODE.	FIG.	QT.	DESCRIZIONE/DESCRIPTION
DM110207	14	7	RONDELLA GUARNIZIONE M8 / BONDED SEAL M8
DM110437	15	1	PISTONE COMPLETO 53,93 / PISTON ASSEMBLY 53.93
DM110627	15	1	PISTONE COMPLETO 53,94 / PISTON ASSEMBLY 53.94
DM110628	15	1	PISTONE COMPLETO 53,95 / PISTON ASSEMBLY 53.95
DM110629	15	1	PISTONE COMPLETO 53,96 / PISTON ASSEMBLY 53.96
DM110630	15	1	PISTONE COMPLETO 53,97 / PISTON ASSEMBLY 53.97
DM110631	15	1	PISTONE COMPLETO 53,98 / PISTON ASSEMBLY 53.98
DM110438	16	1	SEGMENTO PISTONE / PISTON RING
DM110467	17	4	O- RING 1,78 x 1,78 / O- RING 1.78 x 1.78
DM110595	18	4	VITE TBEI M3 x 10 / TBEI SCREW M3 x 10
DM110460	19	1	KIT ALETTE PLASTICA / PLASTIC CYLINDER WING KIT
DM110373	20	1	GUARNIZIONE CILINDRO KZ SPESSORE 0,05 / KZ CYLINDER GASKET TH. 0.05
DM110375	20	1	GUARNIZIONE CILINDRO KZ SPESSORE 0,10 / KZ CYLINDER GASKET TH. 0.10
DM110376	20	1	GUARNIZIONE CILINDRO KZ SPESSORE 0,2 / KZ CYLINDER GASKET TH. 0.2
DM110377	20	1	GUARNIZIONE CILINDRO KZ SPESSORE 0,3 / KZ CYLINDER GASKET TH. 0.3
DM110378	20	1	GUARNIZIONE CILINDRO KZ SPESSORE 0,4 / KZ CYLINDER GASKET TH. 04
DM110379	20	1	GUARNIZIONE CILINDRO KZ SPESSORE 0,5 / KZ CYLINDER GASKET TH.0.5

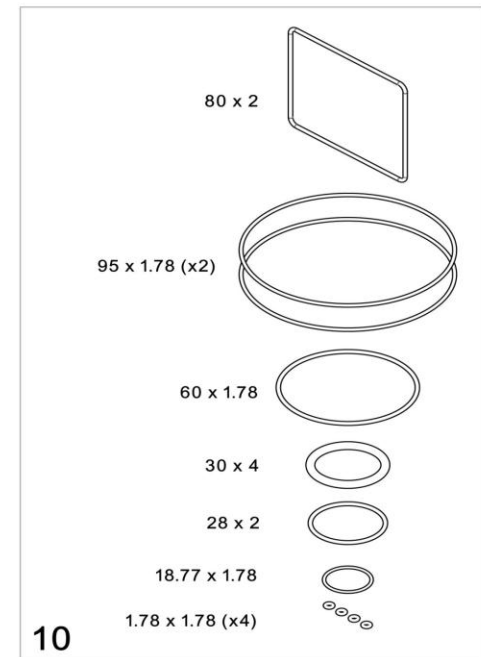
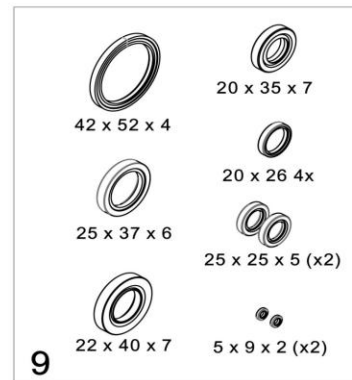
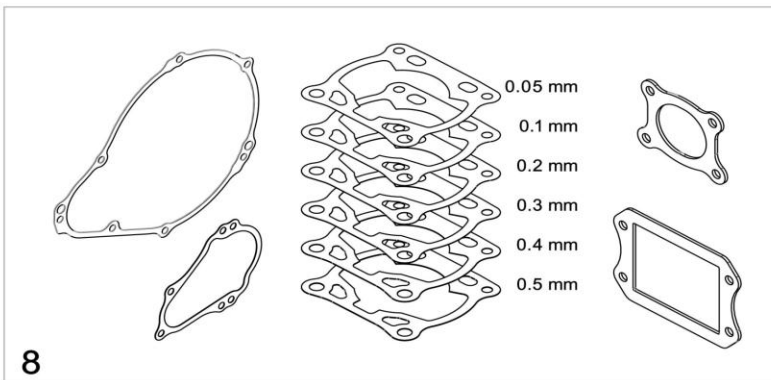
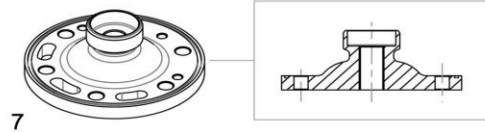
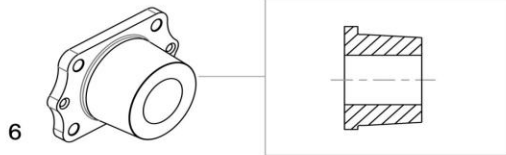
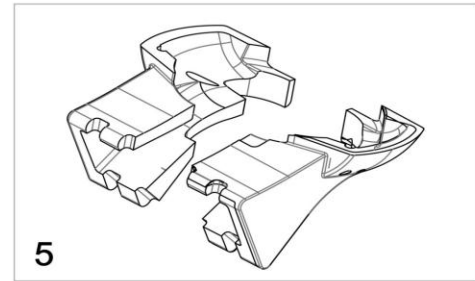
GRUPPO MARMITTA/EXHAUST SYSTEM KK1



GRUPPO MARMITTA/EXHAUST SYSTEM KK1

CODE.	FIG.	QT.	DESCRIZIONE/DESCRIPTION
DM110451	1	1	MARMITTA / EXHAUST PIPE
DM110452	2	1	CURVA SILENZIATORE / SILENCER HOSE
DM110454	3	4	MOLLA SCARICO / EXHAUST SPRING
DM110453	4	1	SILENZIATORE / SILENCER

PARTI SPECIALI E KITS /SPECIAL PARTS AND KITS KK1



PARTI SPECIALI E KITS /SPECIAL PARTS AND KITS KK1

CODE.	FIG.	QT.	DESCRIZIONE/DESCRIPTION
DM110649	1	1	CANDELA NGK R7282-10 / SPARK PLUG NGK R7282-10
DM110650	2	1	CANDELA NGK R7282-105 / SPARK PLUG NGK R7282-105
DM110651	3	1	CANDELA NGK R7282-11 / SPARK PLUG NGK R7282-11
DM110652	4	1	PIPETTA CANDELA NGK TRS1225 /SPARK PLUG CAP NGK TRS1225
DM110653	5	1	KIT INSERTO CARTER MOTORE LAVORABILE / ENGINE CARTER INSERT KIT (MACHINABLE)
DM110654	6	1	COLLETTORE SCARICO LAVORABILE / MACHINABLE EXHAUST MANIFOLD
DM110655	7	1	INSERTO TESTA LAVORABILE / MACHINABLE CYLINDER HEAD INSERT
DM110674	8	1	KIT COMPLETO GUARNIZIONI / GASKET ASSEMBLY KIT
DM110675	9	1	KIT COMPLETO PARAOLI / OIL SEAL ASSEMBLY KIT
DM110676	10	1	KIT COMPLETO O-RING /O-RING ASSEMBLY KIT